

# Lower Flint-Ochlockonee Regional Water Planning Council Metering Update

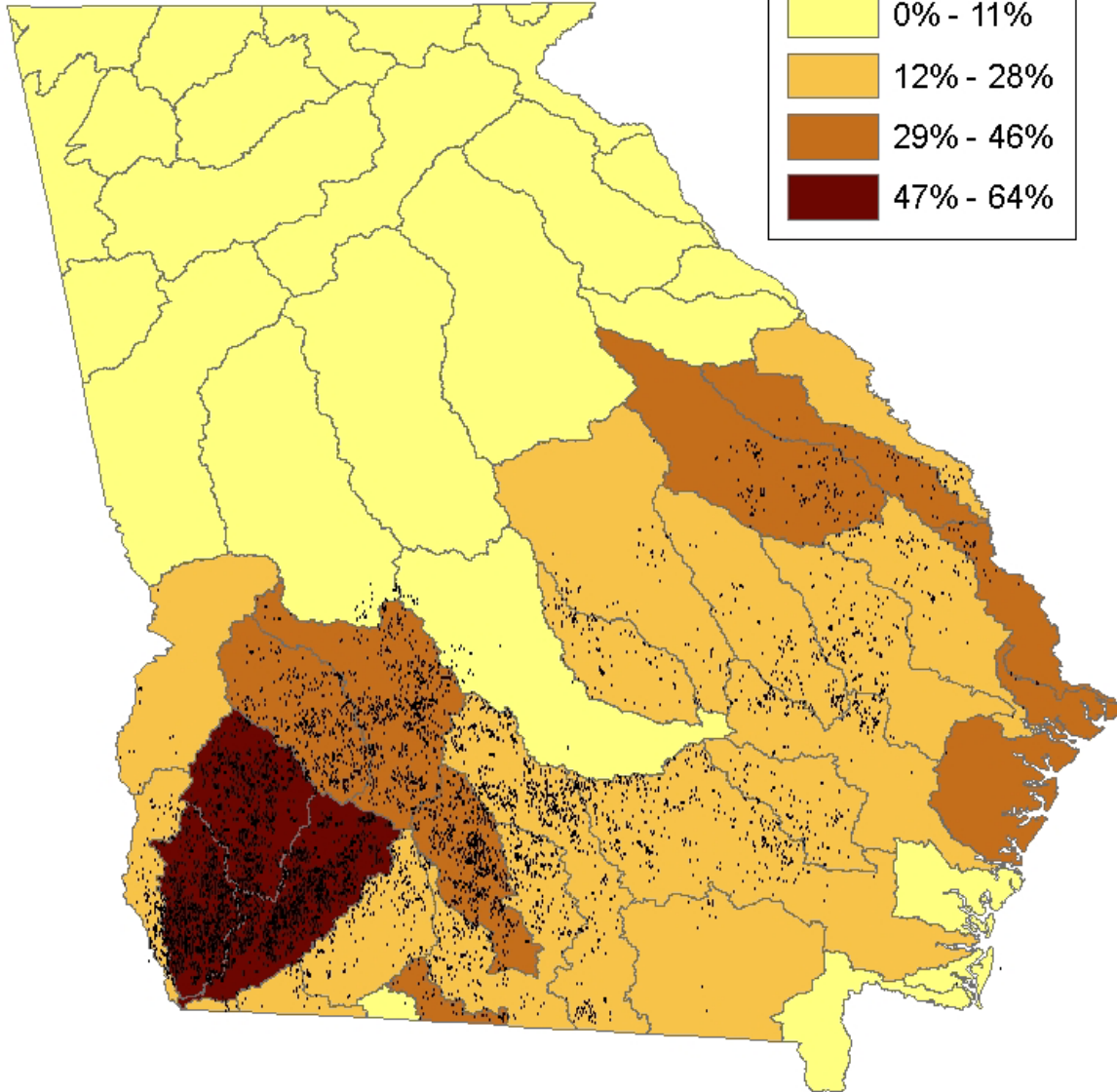
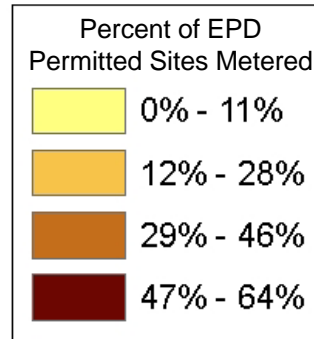
June 11, 2009

**Dave Eigenberg**  
**Georgia Soil & Water**  
**Conservation Commission**  
**Dawson: 229-995-6001**  
**Athens: 706-542-3065**  
**[deigenberg@gaswcc.org](mailto:deigenberg@gaswcc.org)**

# PRESENTATION OBJECTIVES . . . .

- **Metering Status Report**
  - Installations
  - Data Collection
  - Maintenance/Repair
- **Explanation For Missed Metered Sites**
- **Use of Ag Water Use Data**

# Georgia Agriculture Water Metering Program

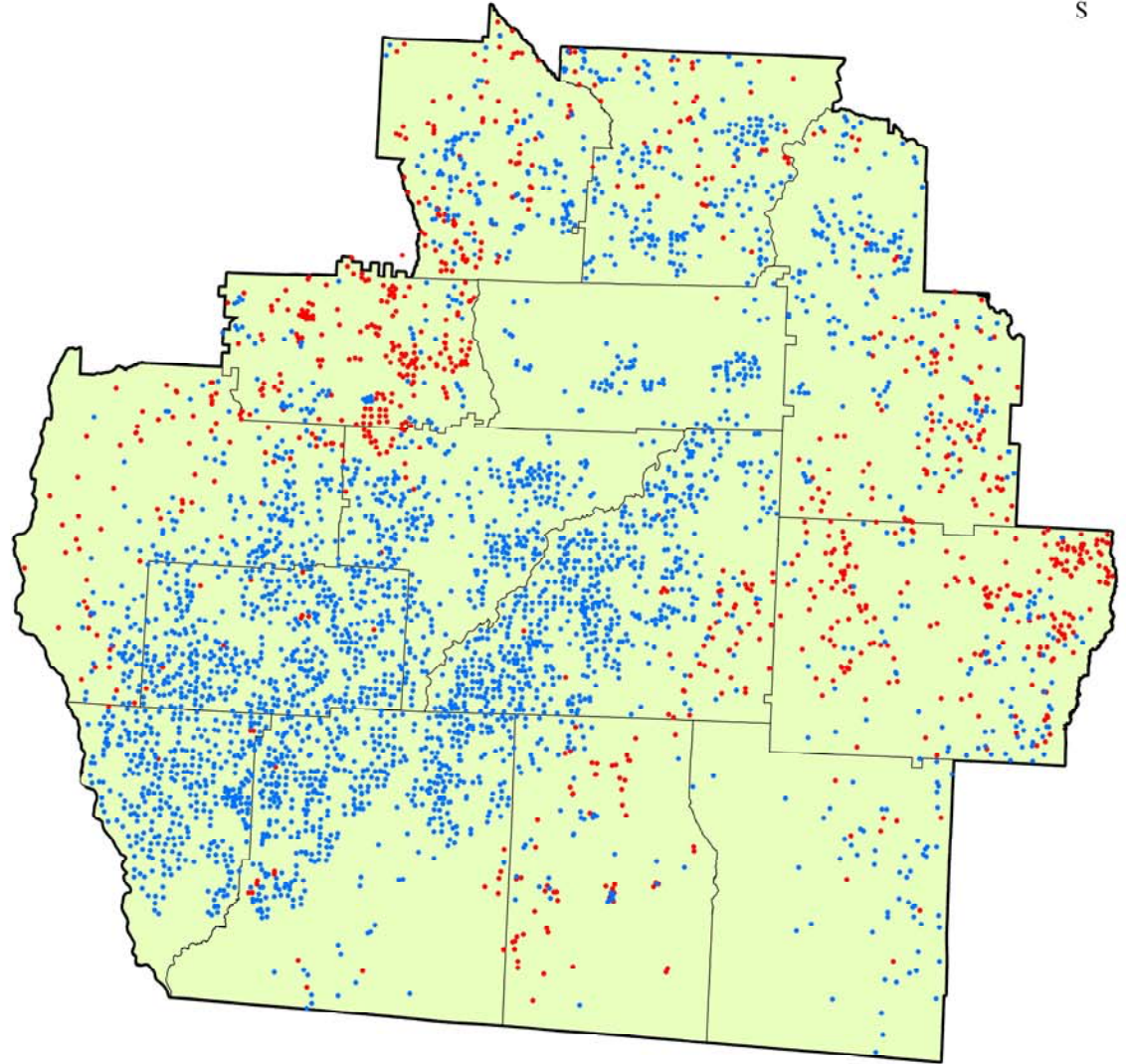


Installations to Date	
Year	Number
FY04	137
FY05	1222
FY06	2823
FY07	1318
FY08	2183
FY09	952
Total	8635

# The Lower Flint - Ochlockonee Water Planning Council





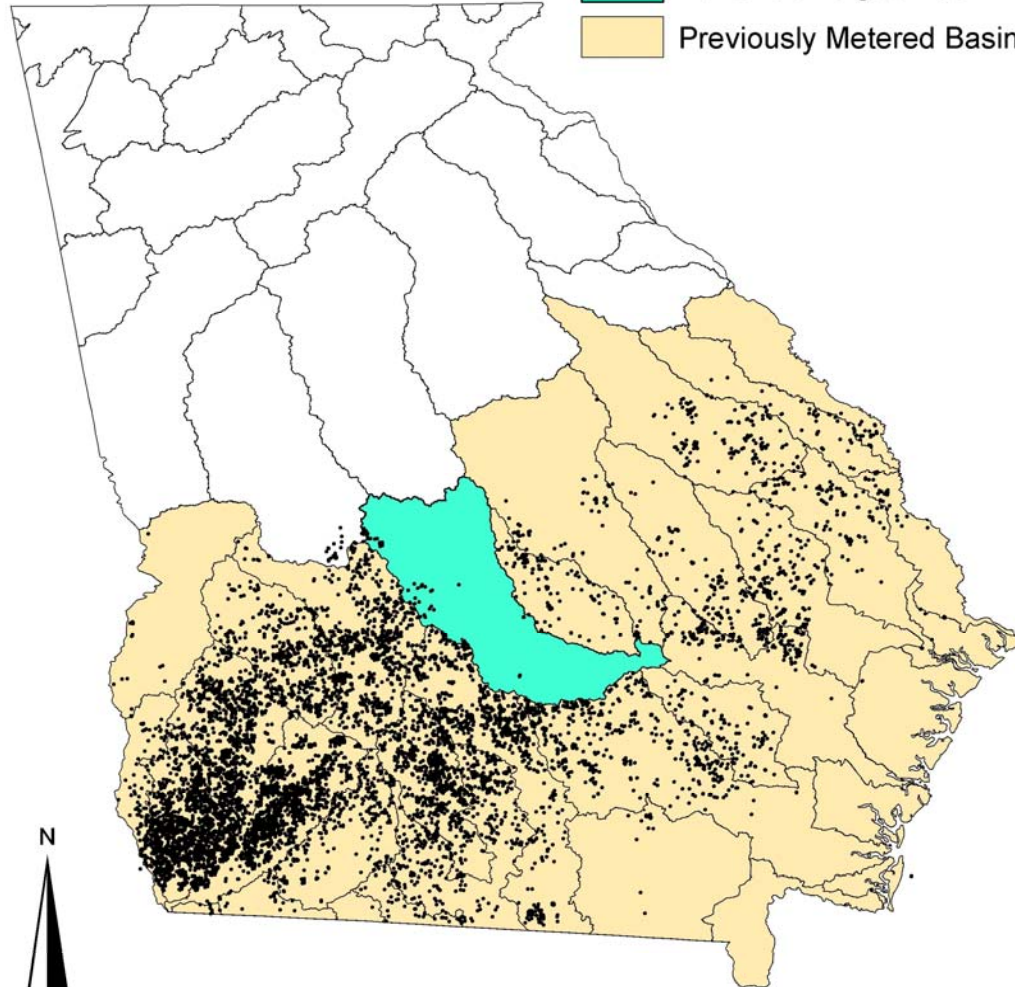
<b>EPD Permits</b>	<b>7,241</b>
<b>Metered Permits</b>	<b>3,580</b>
• <b>Surface Water</b>	<b>925</b>
• <b>Groundwater</b>	<b>3,237</b>
<b>No Pump Present</b>	<b>1,537</b>



# Georgia Agriculture Water Metering Program

FY 2010 Proposed Meter Installation Area  
- 610 Meters

-  Lower Ocmulgee Basin
-  Previously Metered Basins



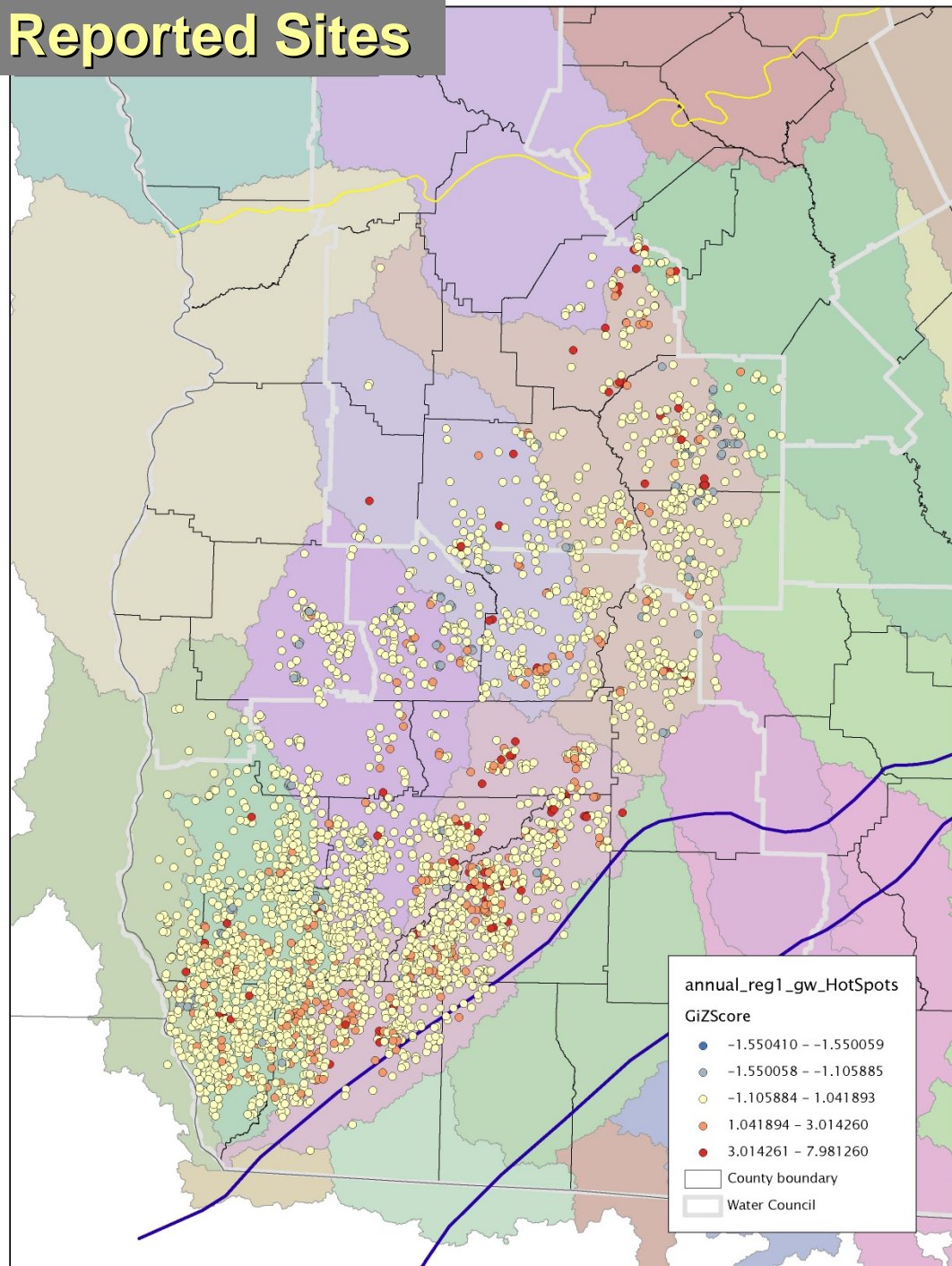
# PRESENTATION OBJECTIVES . . . .

- **Explanation For Missed Metered Sites**
  - Additional Irrigated Land Developed
  - Improved Data
  - No EPD Permit
  - GSWCC Error

# Uses of Ag Water Use Data

- Provide a water management tool to assist in data collection for water conservation programs.
- Help identify irrigation systems where application rates are high when compared to subbasin average, enabling better utilization of agency's cost share dollars.

# GW Annually Reported Sites



## **Uses of Ag Water Use Data** (CONTINUED)

- Track ag water use by subbasin or area of concern of the RWC.
- Provide an EPD groundtruthed permit inventory.
- Provide data to support ag water use demand forecasting.